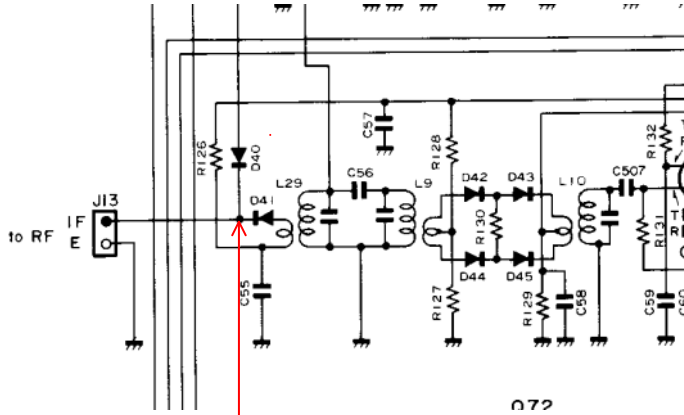


# IC751 Softrock40 I/Q at 9.015MHz IF

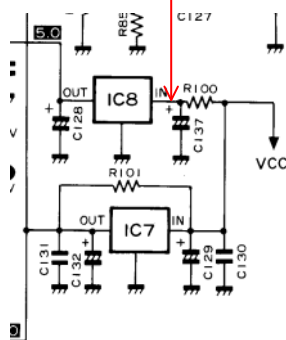
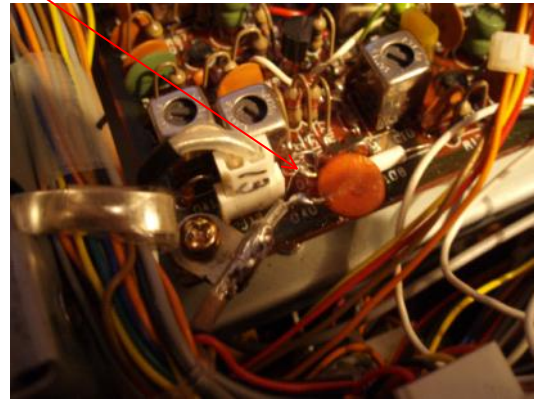
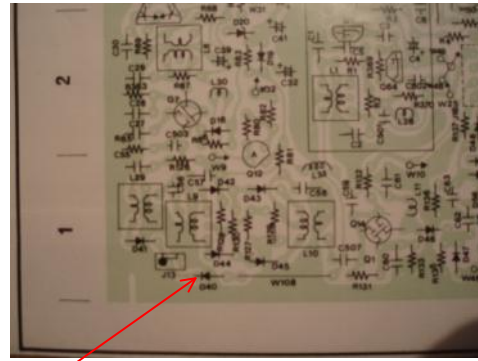
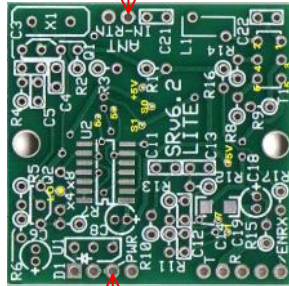
24.toukokuuta 2008  
7:23

## INTERFACING



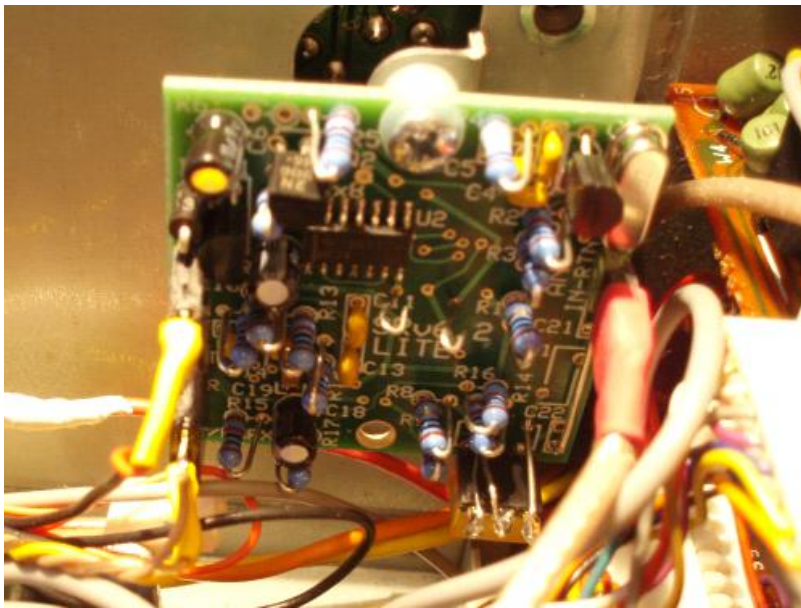
47 pF

- Softrock 40 6.2 Lite
- 12MHz Xtal
- 3 / 4 sampling.  
i.e.  $12 * 3 / 4 = 9$  MHz



## General Notes

- The input filter parts are not installed (C21, C22, L1)
- T1 is replaced with Mini Circuits factory made 2:1:1 broadband transformer (I have those in my junkbox, T1 can easily be wound manually on the kit toroids).
- My primary plan was to connect the hook in 1st IF but this 2nd IF seems to be quite satisfactory so I'll keep this until I get some motivation to getting it somehow better.
- Perhaps a buffer is needed for preventing the 12MHz signal injection directly to IF-circuit. There may be now place as the input filter is removed.



Hi Jarmo!

I have tested to tap IF-signal from my IC-751A now, and I'll just give you a little update.  
 Started to modify my SRLite 40m version to 9mhz. Then I built the JFET buffer and connected it to the same point as you described to me.

1) With JFET buffer, signal was a little weaker in the SRLite. S9 on the 751A was down S3-5 on Rocky S-meter, and hard to copy weak signals.

2) Tested without the JFET and using 22-47pf but signal was maybe even a little weaker now. No effect at the IC-751A RX noticed.

3) Moved the tap point to another spot, between D77/D79 in 751A - after a tip from Barry, GM3YEH- (should be D49/D51 in 751) and now things started to happen!  
 -Using 22pf the SRLite and 751A was quite equal in S-meter reading, but the 751A was down a little in signal now. You can easily hear the difference when IF-tap is IN or OUT.

4) Now I connected the simple JFET buffer at D77 and now it works 100% - no effect on the 751A and weak stations is no problem on the SRLite. S readings on Rocky and 751A are almost the same.  
 (I will start up my signal generator to do a better test, comparing SRL and 751A when I get more time... :)

Using Audigy2 soundcard, my screen is free from spurs and just a very thin line in the center of Rocky screen.

-I send you a picture from 751 Mainboard chema, where to look for D49, and also how my JFET buffer looks like.

All for now!  
 73's

